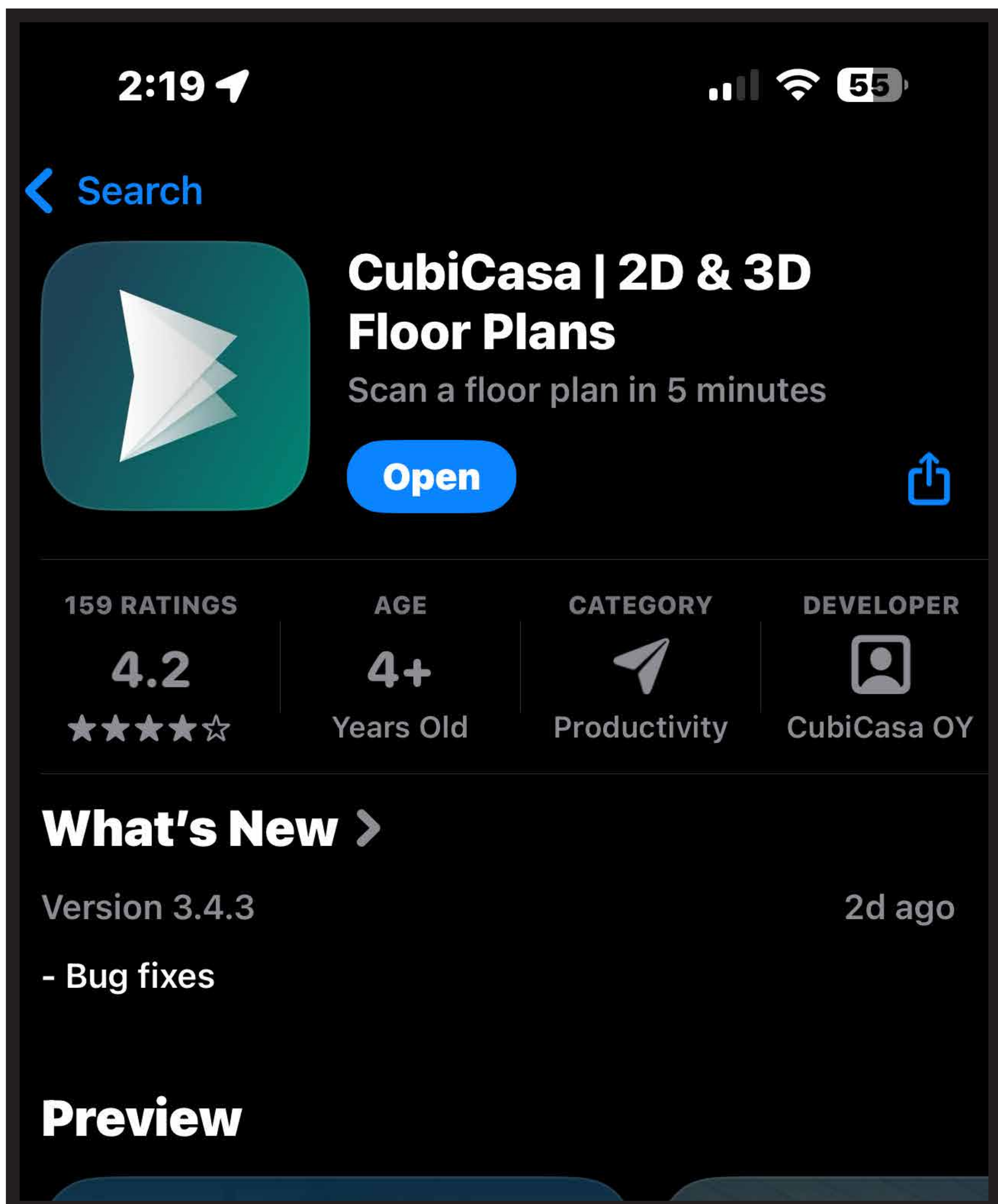


## Supported Equipment

- iPhone 7 or Newer
- Supported Android Device From:
  - Google ● Huawei ● LGE
  - OnePlus ● Samsung
  - Xiaomi ● Motorola ● Sony



## **IMPORTANT RECOMMENDATIONS**

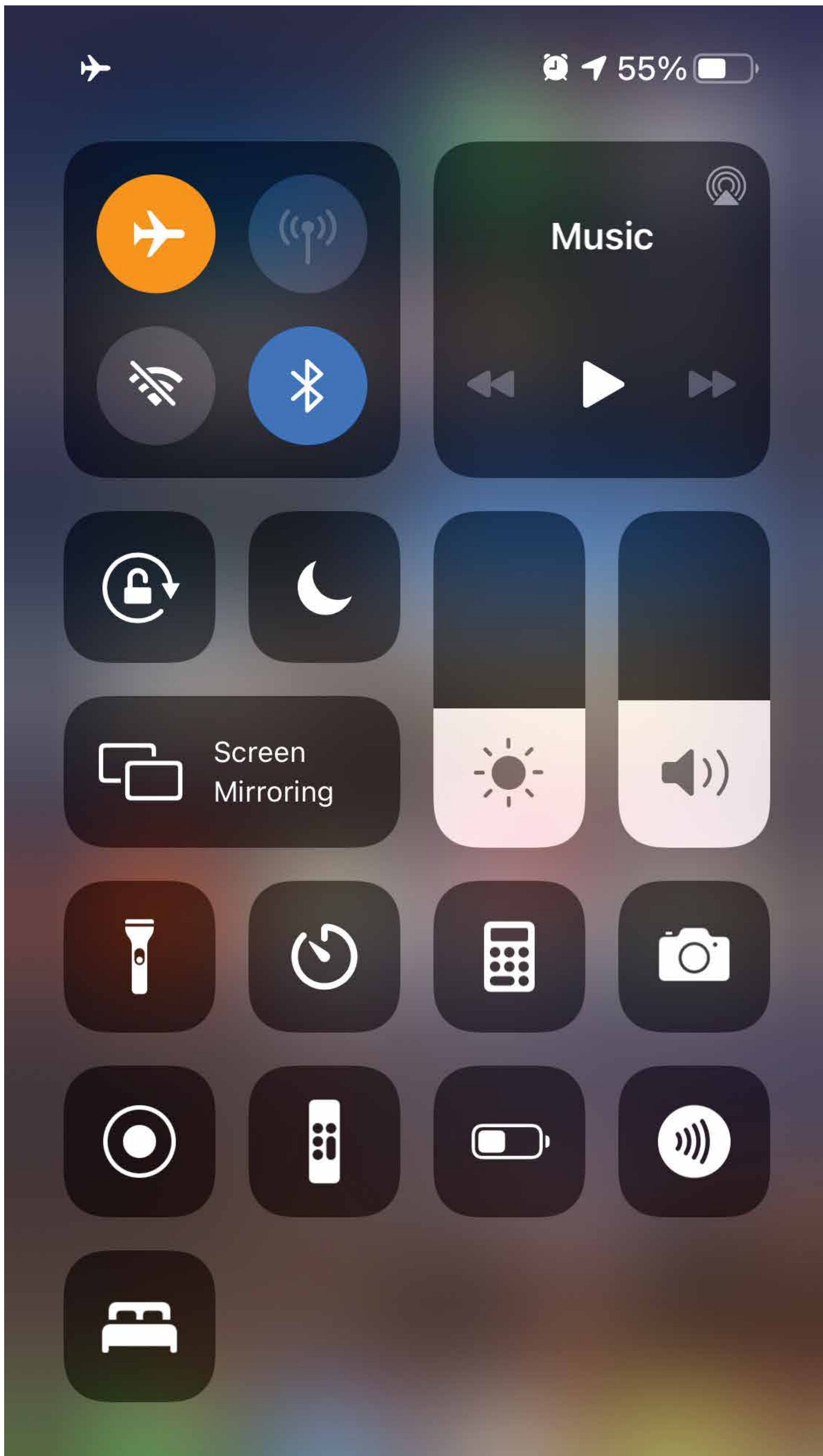
- Produce only ONE scan per reference number
- Start with the lowest floor, work your way up
- Complete main house first, then move on to detached structures, stop recording and upload after all add'l structures have been completed

## **Pre-Scan Housekeeping**

- Put phone into Airplane Mode
  - Incoming calls will disrupt the scan, causing the scan to be repeated
- Turn on all lights
- Open all doors
- Insure all occupants are out of the home

**Log into the CubiCasa app  
with the Collaborator Login  
provided to you by CubiCasa**

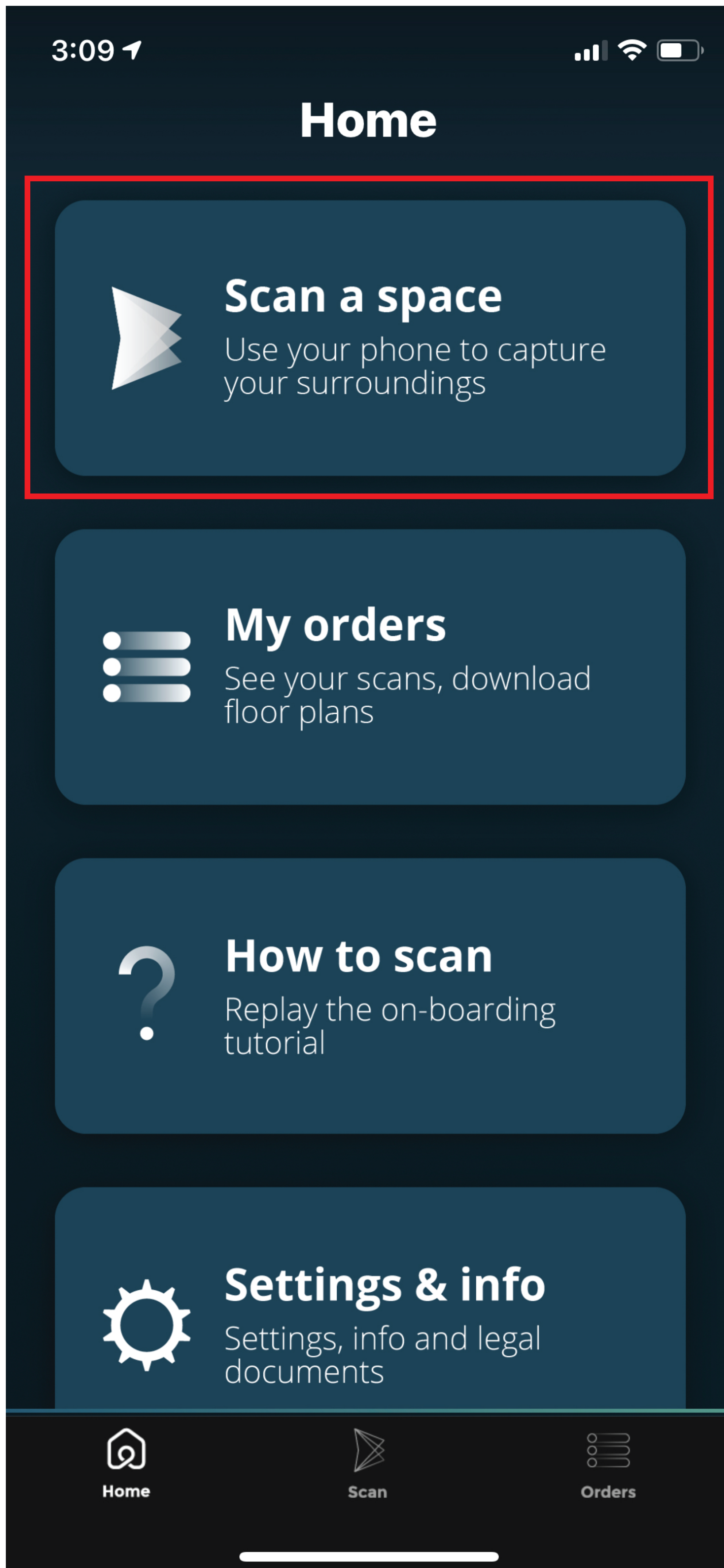
# Prepare Your Phone To Scan



## 1. Put Phone In Airplane Mode

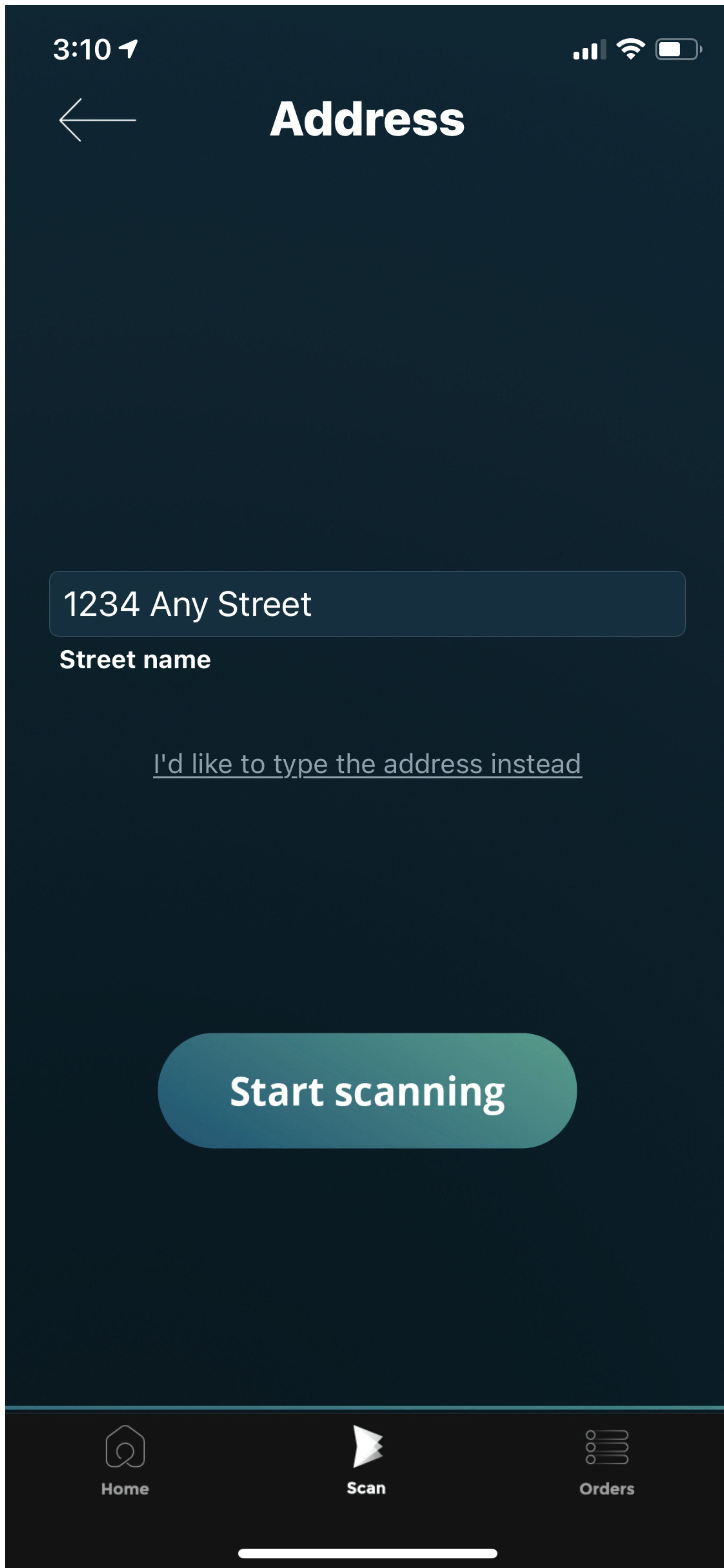
(incoming calls will disrupt scanning of the house)

## Prepare Your Phone To Scan



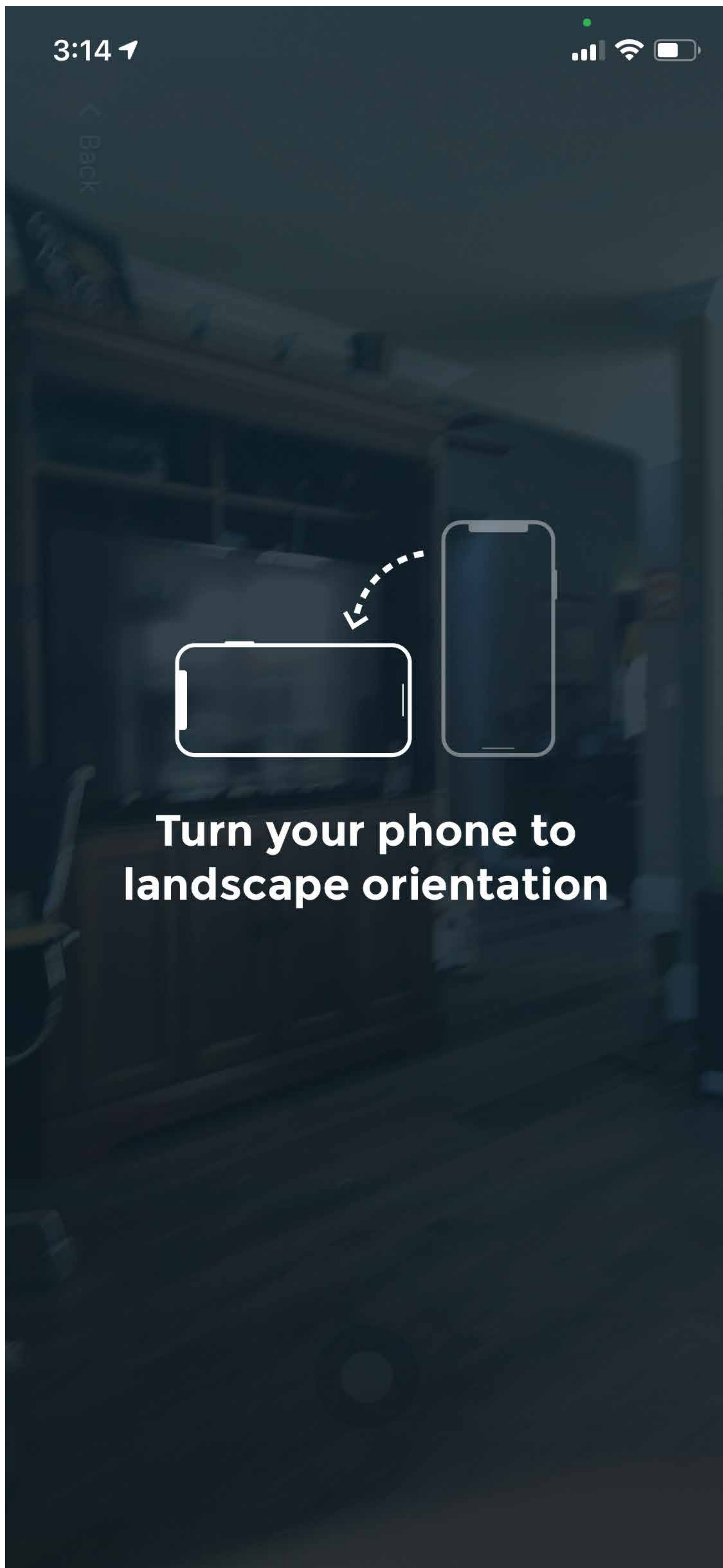
**2. Choose “Scan a Space”**

# Prepare Your Phone To Scan



**3. Enter the address and start scanning**

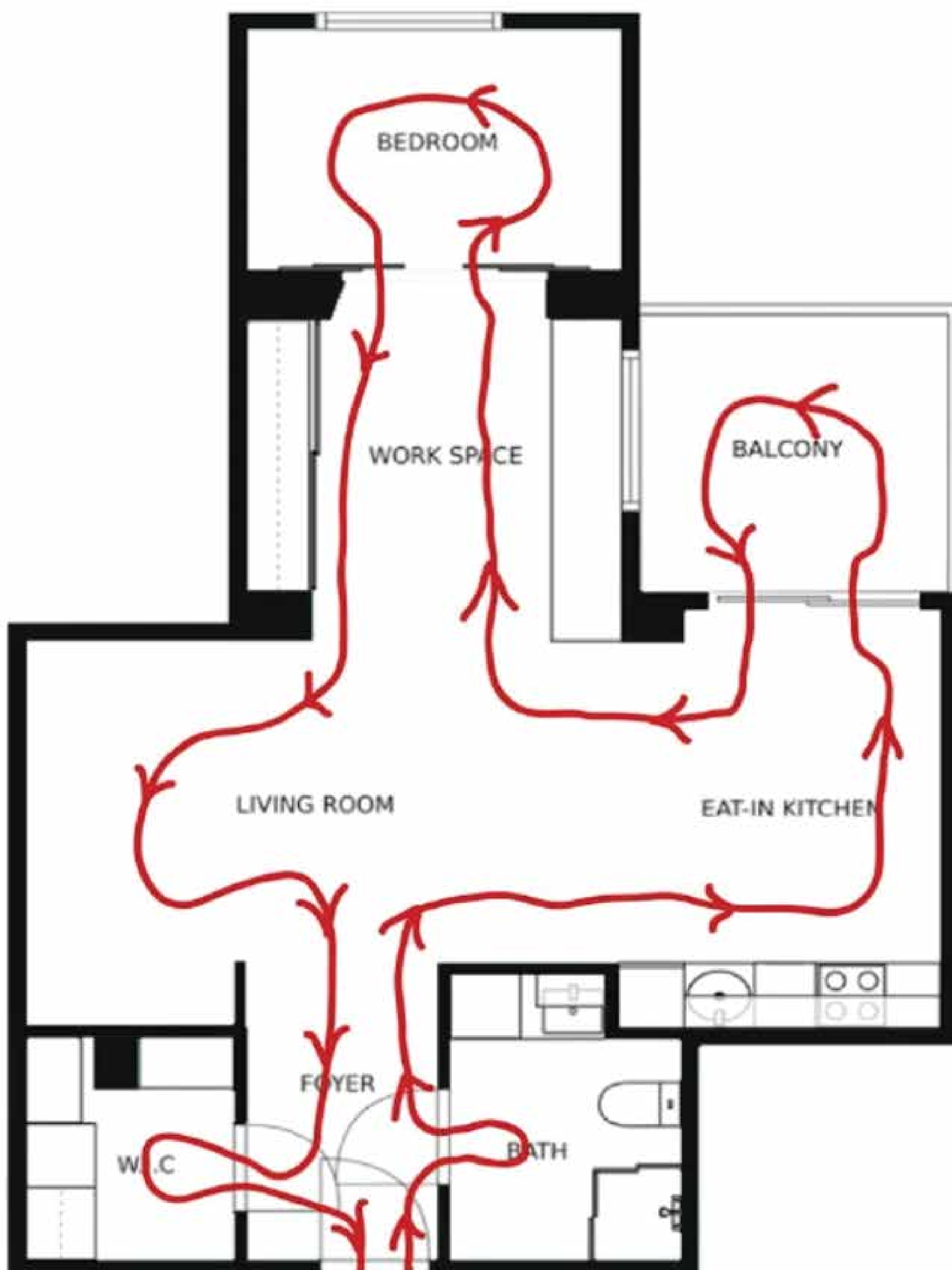
## Prepare Your Phone To Scan

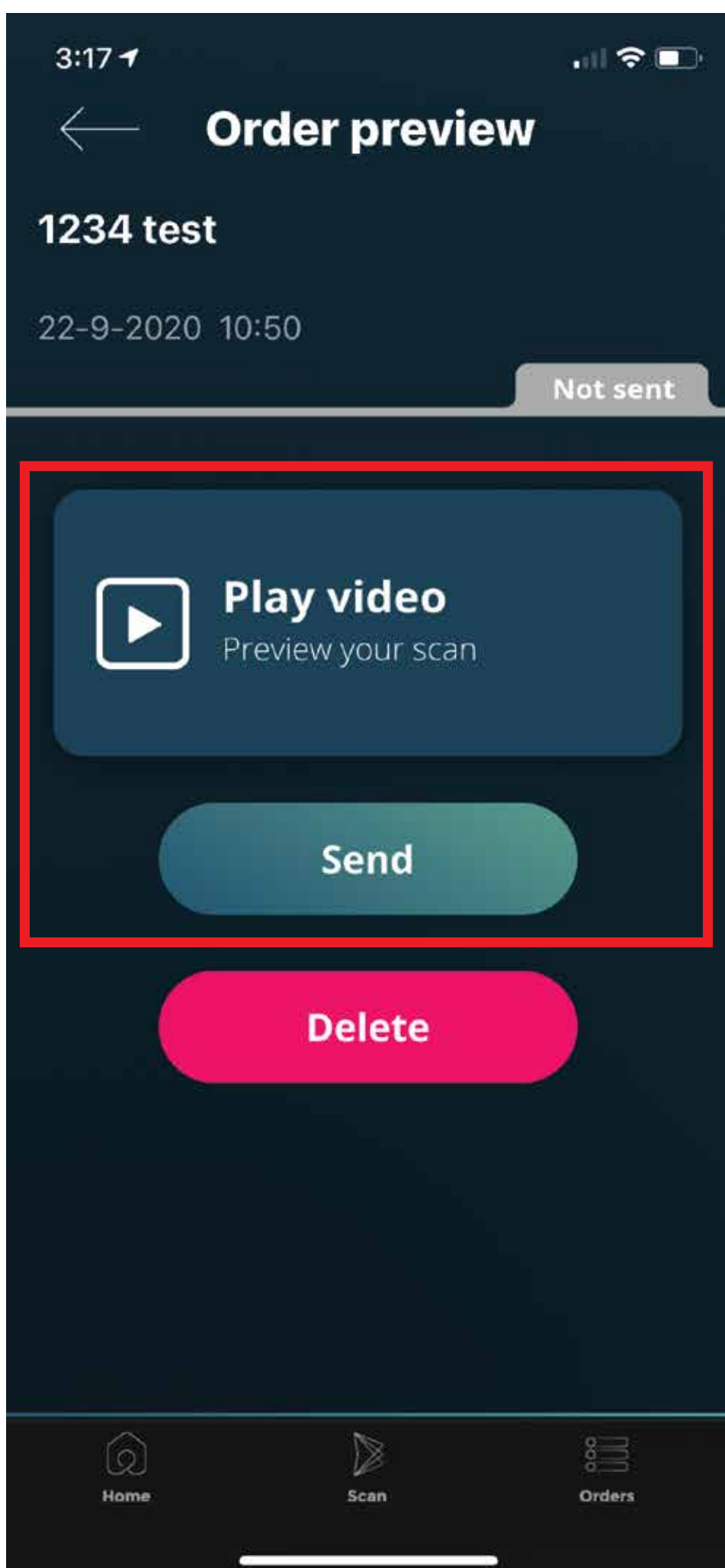


**4. Rotate phone into landscape orientation**

## Completing The Floorplan Scan

1. Start on the lowest floor, follow a logical walking path through the home
2. Keep your phone at chest height, pointed downwards
3. Focus on where the floor meets the wall, with more emphasis on the floor
4. Walk forward, not sideways
5. Scan small spaces like pantry or powder room through the door without entering
6. In small rooms, back out to avoid turning around
7. Stop, pan up to show WINDOWS and BUILT IN cabinets
8. Do not show ceilings and walk at a steady pace
9. Continue recording while walking to staircases or outside to detached structures
10. Stop recording & upload after ALL structures have been completed





**Play Video to review then press "send"**