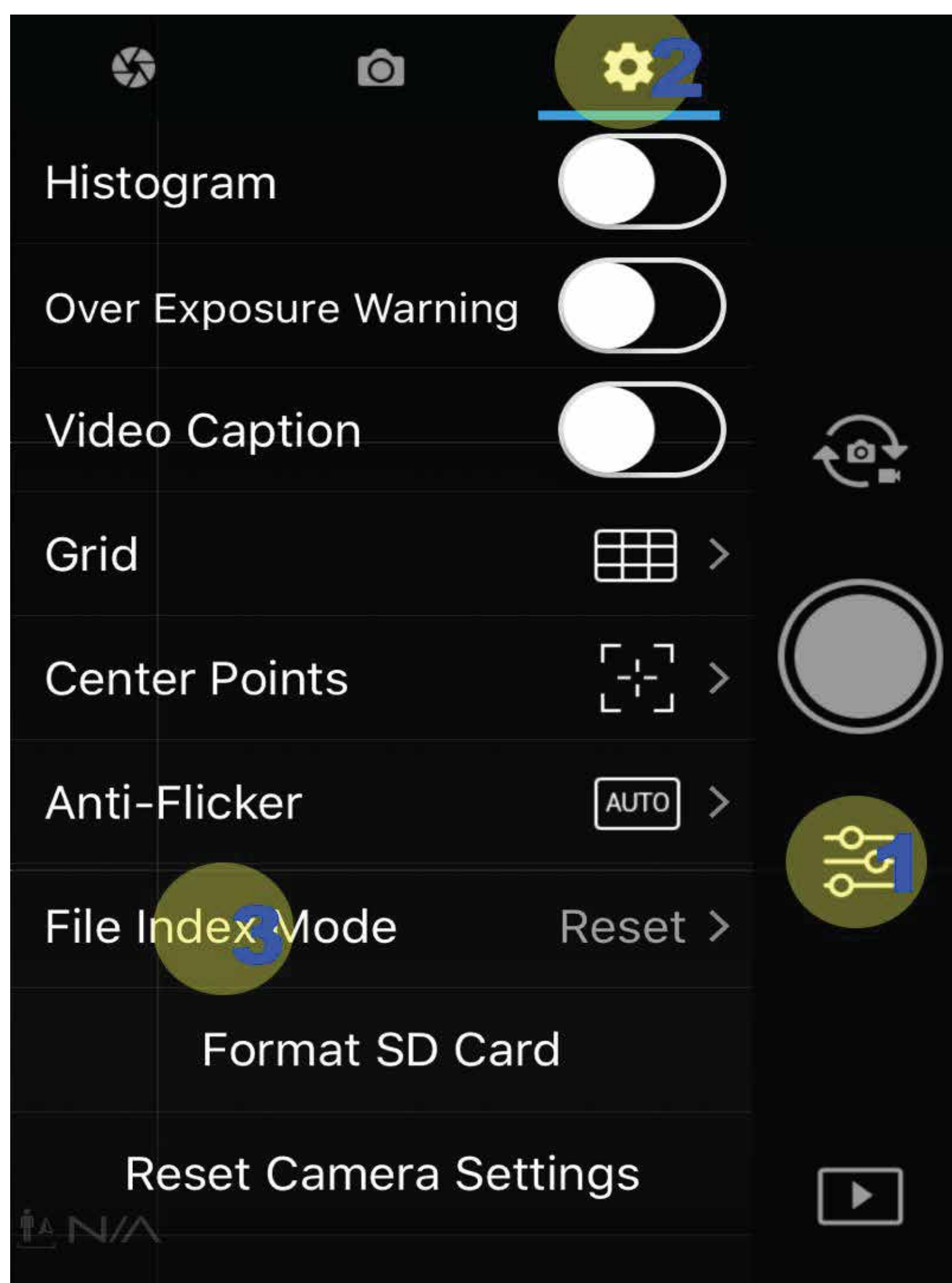


## Before You Fly

- Survey the area, find the tallest obstacle, be sure to fly above it
- Most street lights are 25' tall
- You are able to fly a maximum of 400' if needed
- Must maintain line-of-sight with your drone
- Do not intentionally fly over unprotected persons & remain at least 25' from individuals and vulnerable property
- Only fly on a full battery
- Keep your app and drone firmware up-to-date

## File Management

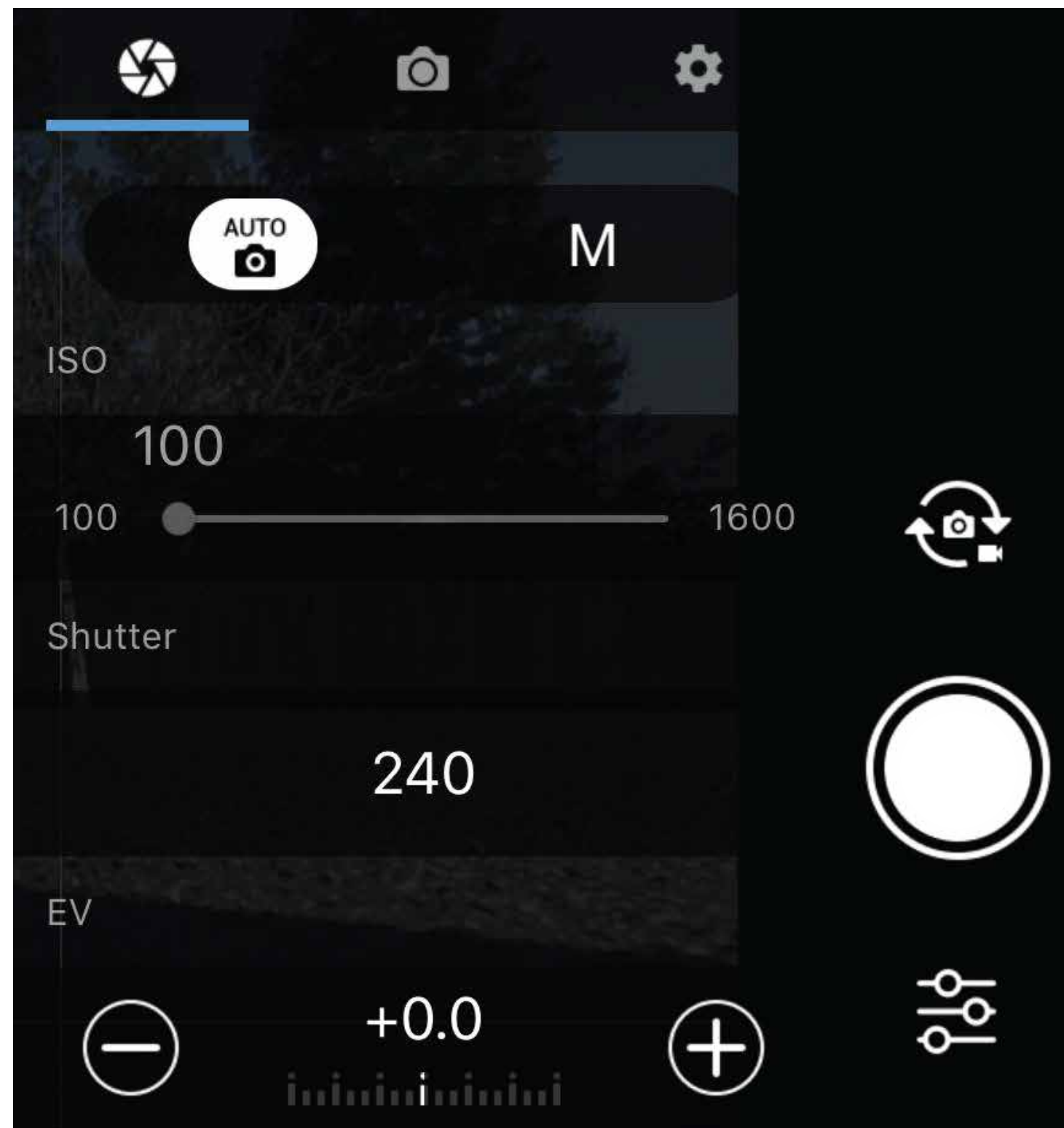
- Create new folders for every property you photograph
- Select the "gear" icon
- Under File Index Mode choose "Reset"
- If you reset every time you fly, you will have a folder for each property photographed and will make file management easier



## Drone Settings

### IMAGE SETTINGS

- Use the "Auto" Mode



### CAPTURE SETTINGS

- Photo Mode: 3 Exposure AEB
- Image Size: 4:3
- Image Format: JPG
- White Balance: AWB
- Style: NONE
- Color: NORMAL

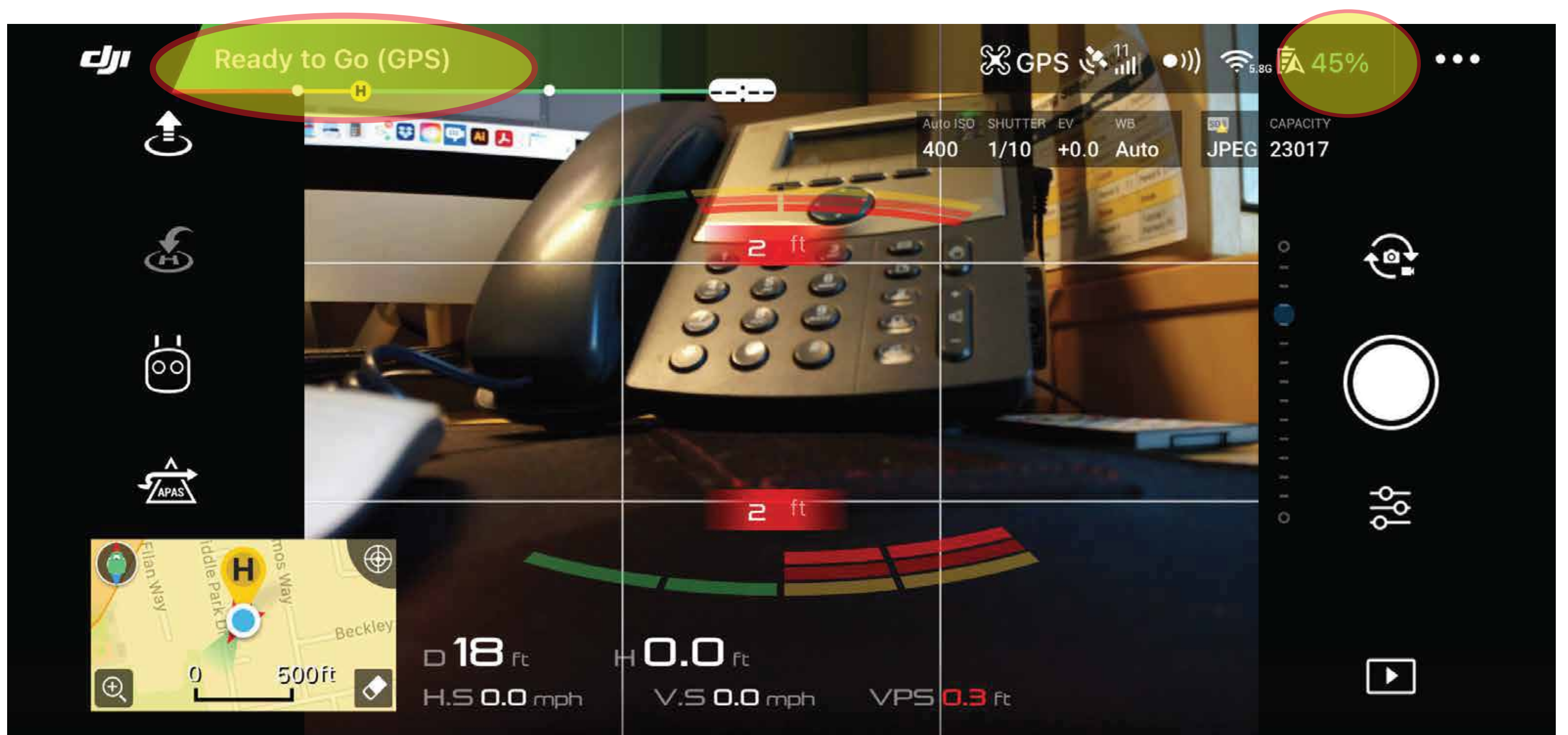


## Before Lift Off

- Check all settings on the drone before taking off. Do not take off if the app displays any error messages or if you have a low battery.
- Check for "Ready to Go (GPS)" indicator --

## ONLY FLY IF YOU SEE THIS ON THE SCREEN

(Although you can fly in non-GPS mode, it is highly discouraged as the aircraft may behave erratically)



## Using Grid Lines

- Use the Grid Lines to ensure you keep the subject as the POI (point of interest)

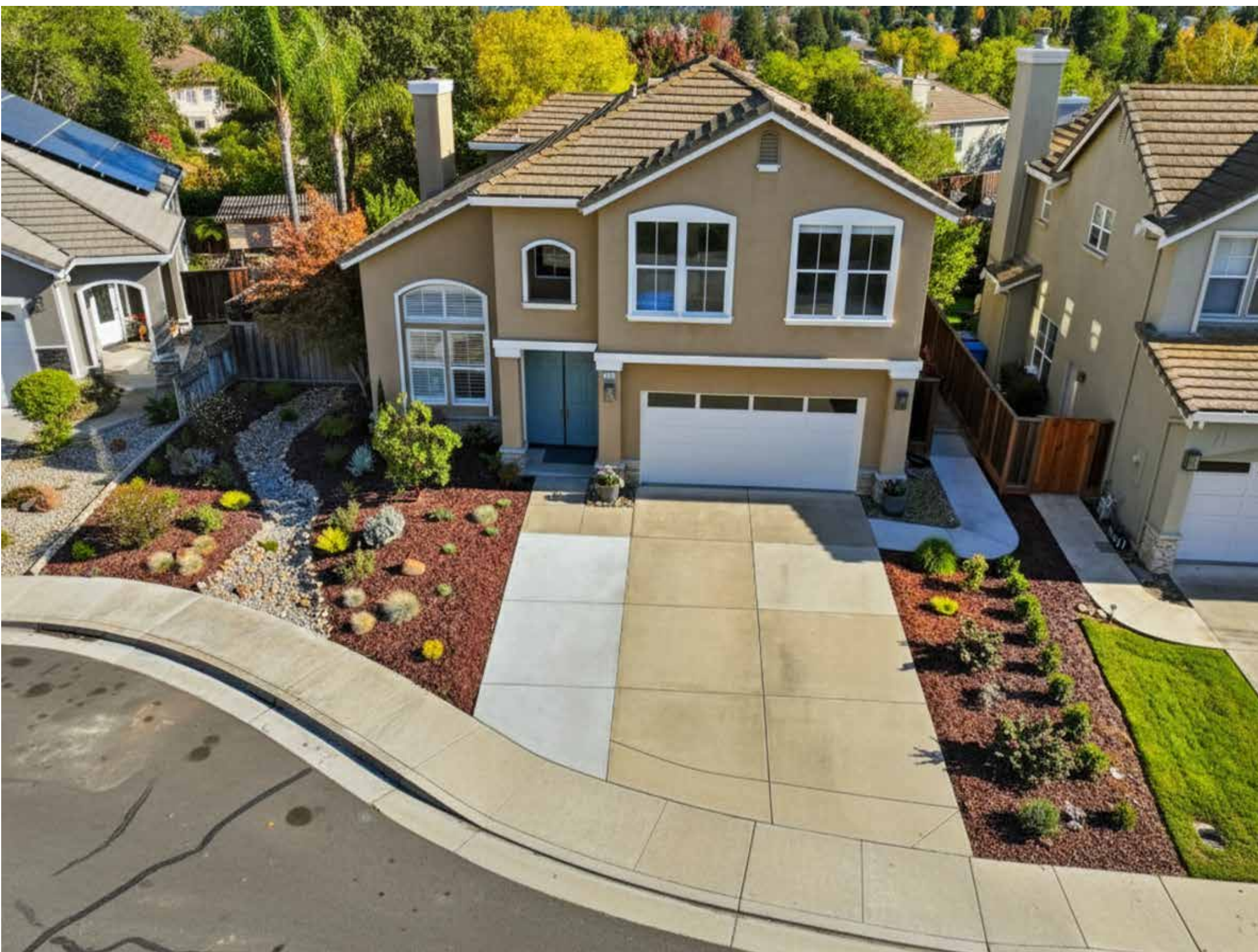


## Aerial Photography

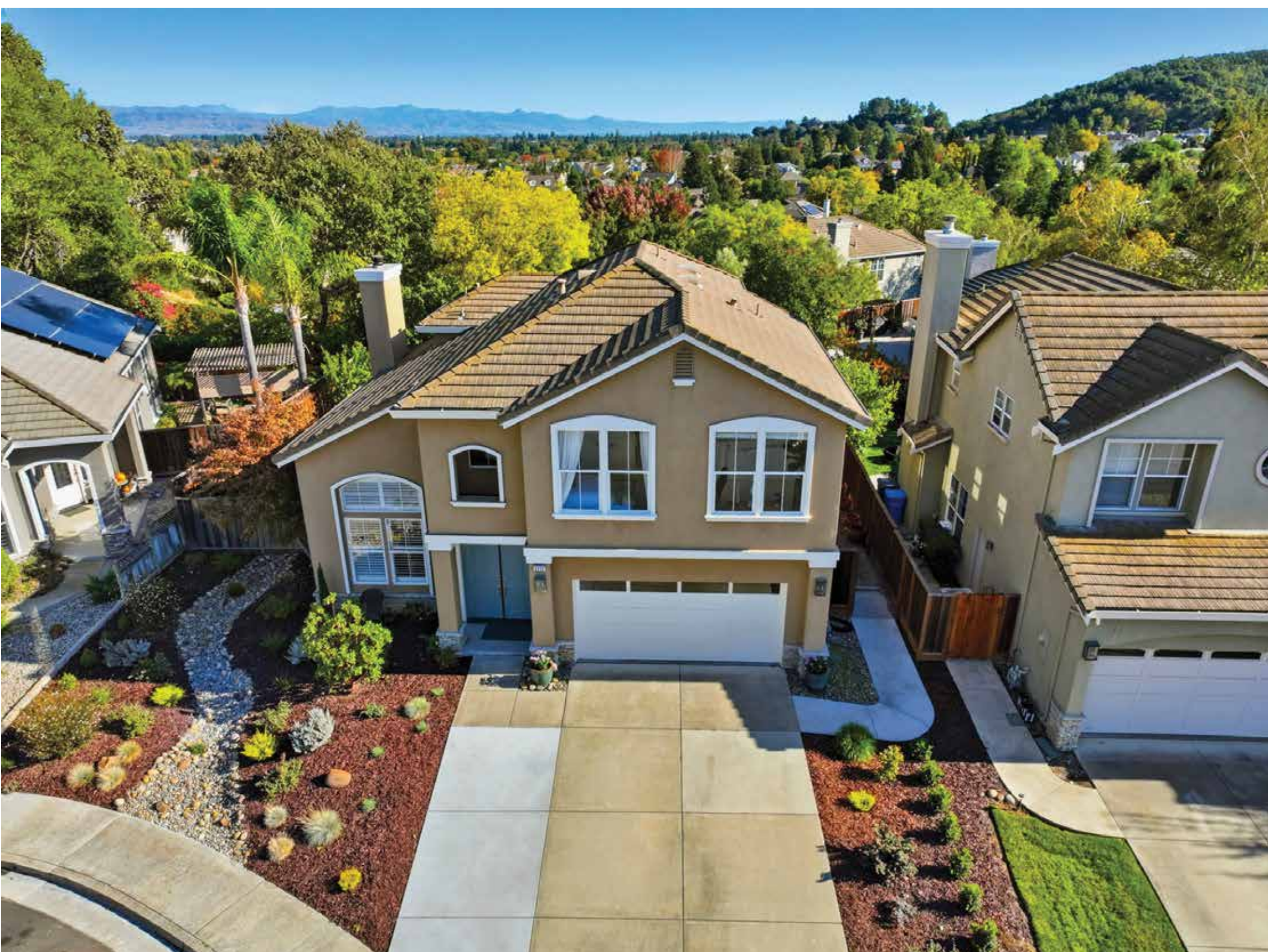
- Start low, at roof line, roughly 10-20' in the air
- Shoot at 3 elevations:
  - Low: 10-15' in the air
  - Medium: 40-65' in the air
  - High: 70-115' in the air
- Take 5 shots per elevation:
  - One from each corner of the lot
  - One bird's eye view showing the lot
- This will net 15 high quality aerial photos

## Horizon Line

To add maximum depth to your aerial images, try to include the horizon line as much as possible. Both photos below are taken from the same position. One shows the horizon, the other does not.



WITHOUT HORIZON LINE



WITH HORIZON LINE